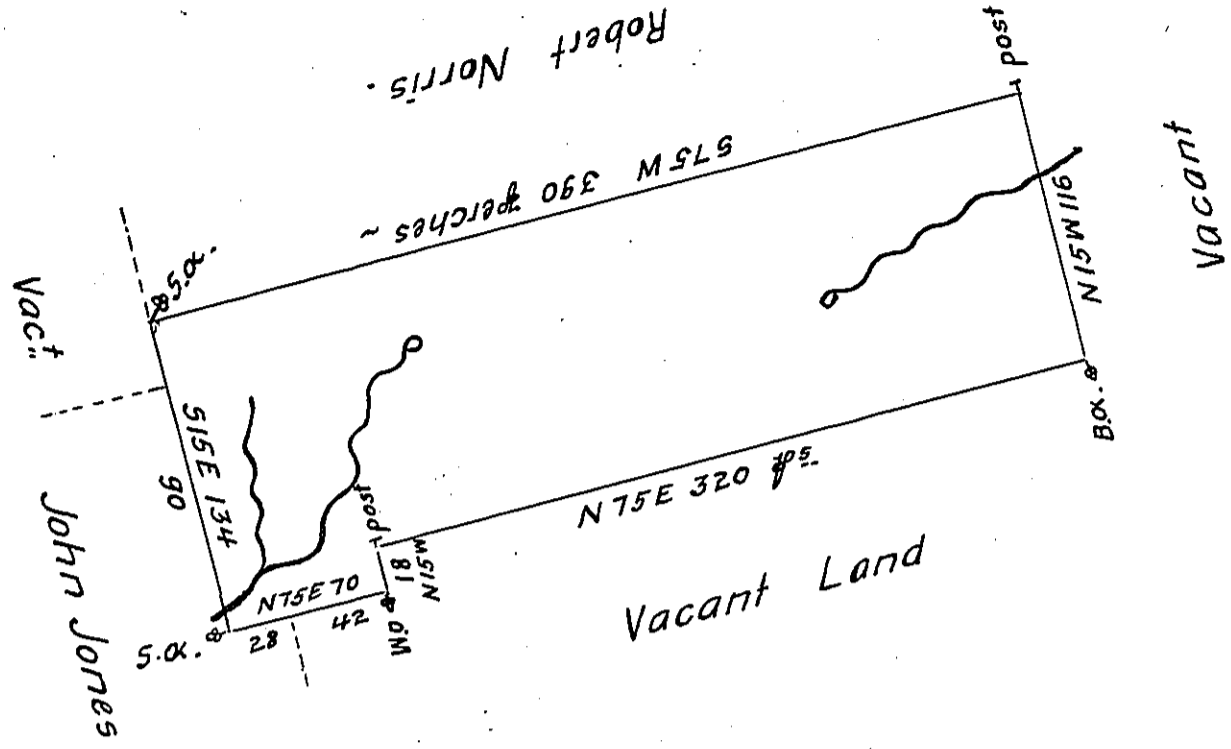


pg 24



L-131

By Virtue of an Application dated the third Day of April 1769.
 N^o 421. Surveyed the 11th June 1769 unto John Reed the above described
 Tract of Land situate on the head of Muddy Run, North of Chillisquaqua
 Creek in the County of Berks, containing two hundred seventy four Acres
 & twenty eight perches with Allowance of Six $\frac{1}{2}$ Cent. ~
 W^m Scull.

IN TESTIMONY that the above is a copy of the original remaining on file in
 the Department of Internal Affairs of Pennsylvania, made
 conformably to an Act of Assembly approved the 16th day of
 February, 1833, I have hereunto set my Hand and caused
 the Seal of said Department to be affixed at Harrisburg,
 this twenty-first day of November 1905

Samuel Brown
 Secretary of Internal Affairs.